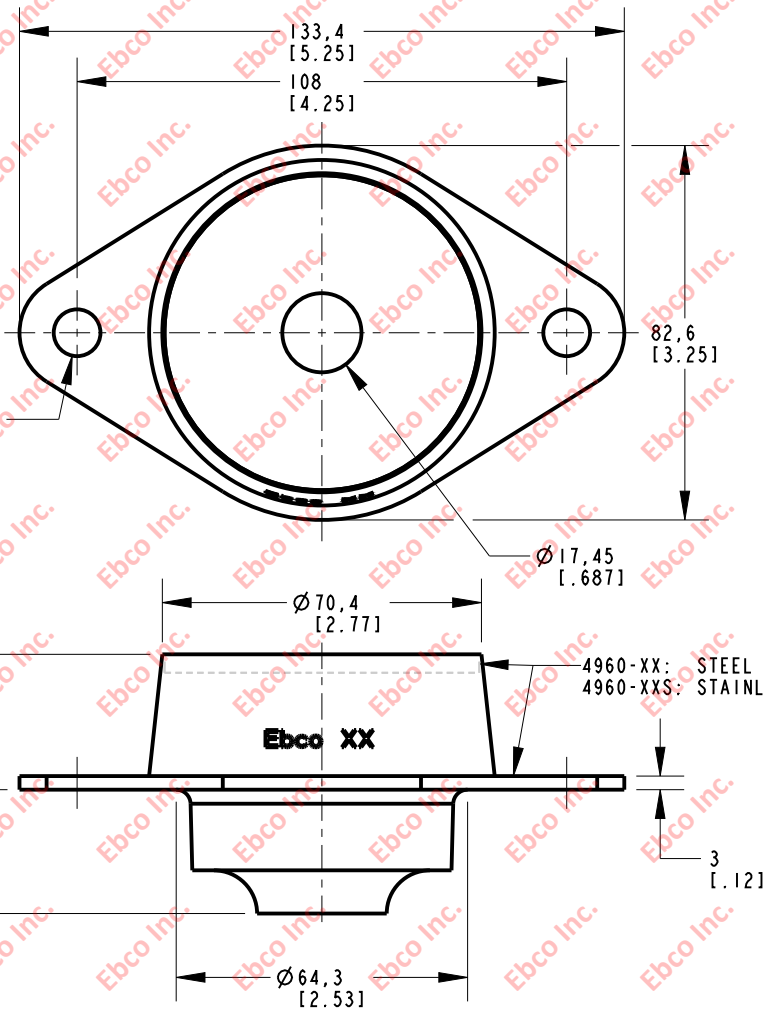


4960

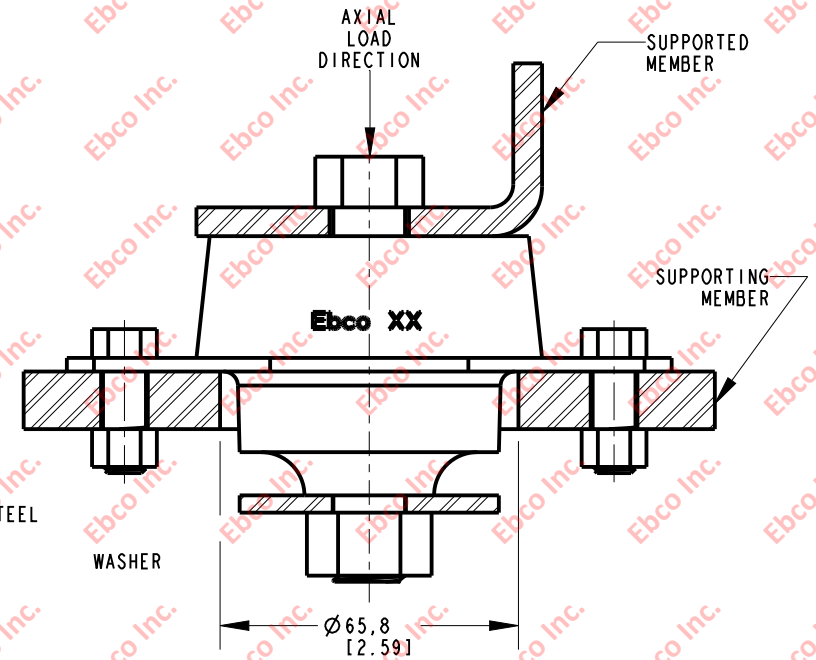
DWG NO.

B

A



INSTALLATION VIEW (Shown under no load)



INSTALLATION DIMENSIONS

PART NUMBER		MAX. AXIAL DEFLECTION		MAX. AXIAL LOAD	
NATURAL RUBBER	NEOPRENE	in	mm	lb	N
4960-71(S)	4960-81(S)	.15	3.81	450	2002
4960-72(S)	4960-82(S)			560	2492
4960-73(S)	4960-83(S)			720	3204
4960-74(S)	4960-84(S)			830	3692
4960-75(S)	4960-85(S)			1000	4450
4960-76(S)	4960-86(S)			1200	5340
4960-77(S)	4960-87(S)			1600	7117

RECOMMENDED BOLT INFORMATION				TIGHTENING TORQUE			
ENGLISH		METRIC		CLAMP LOAD		TIGHTENING TORQUE	
SIZE	GRADE	SIZE	CLASS	lb	N	ft-lb	N-m
5/8	5	M16	9.8	14408	64090	150	203
WASHER SPECIFICATIONS							
O.D.		I.D.		THICKNESS			
in	mm	in	mm	in	mm	in	mm
2.25	57.15	.635	16.13	.15	3.81		



TITLE:		4960	
THE INFORMATION CONTAINED IN THIS DRAWING IS THE SOLE PROPERTY OF EBSCO ANY REPRODUCTION IN PART OR AS A WHOLE WITHOUT THE WRITTEN PERMISSION OF EBSCO IS PROHIBITED.			
TOLERANCES PER RMA STANDARD A3		REV. F	DATE: 05-17-24
			UNITS: mm [INCH]
1330 HOLMES RD. ELGIN, IL 60123			

SPECIFICATIONS SUBJECT TO CHANGE

B

A