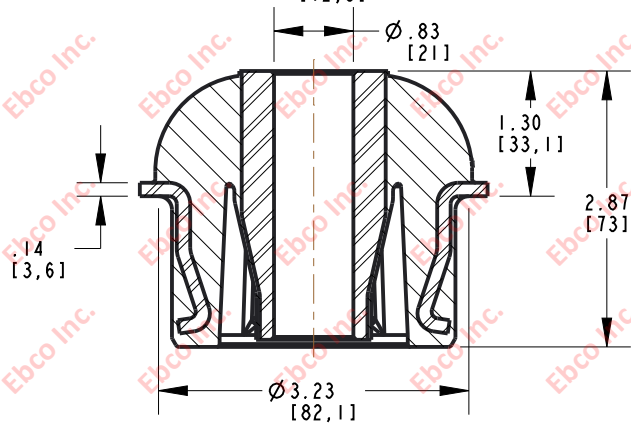
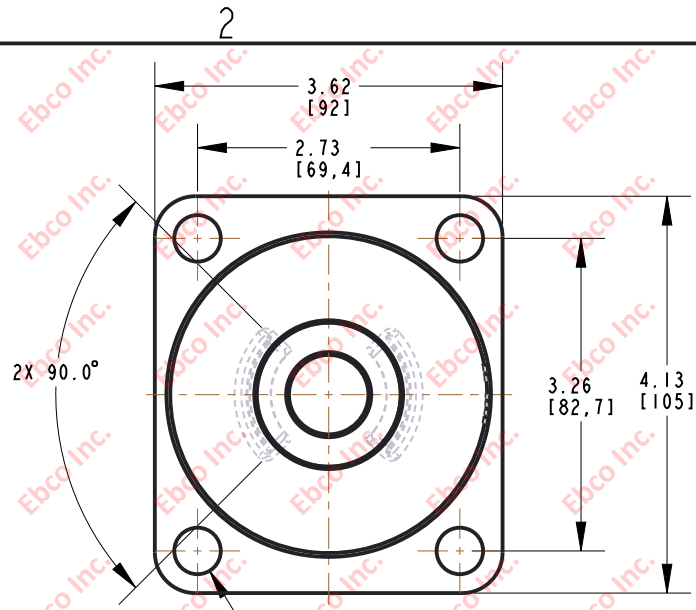
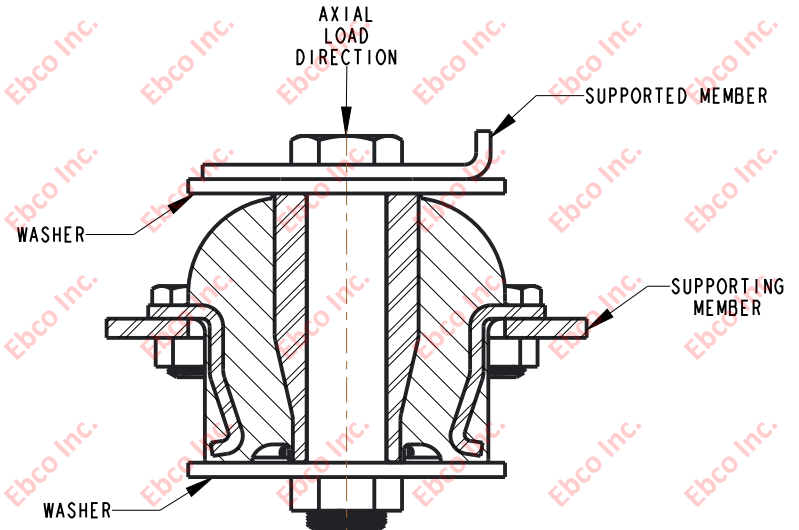


4823

DRG. NO.



INSTALLATION VIEW (Shown under no load)



INSTALLATION DIMENSIONS

RECOMMENDED BOLT INFORMATION				TIGHTENING TORQUE			
ENGLISH		METRIC		CLAMP LOAD		TIGHTENING TORQUE	
SIZE	GRADE	SIZE	CLASS	lb	N	ft-lb	N-m
3/4	5	M18	9,8	21300	94747	266	361

SPECIFICATIONS

PART NUMBER		MAX. AXIAL DEFLECTION		MAX. AXIAL LOAD		TANGENTIAL STIFFNESS	
NATURAL RUBBER	NEOPRENE	in	mm	lb	N	LB/IN	N/mm
4823-70	4823-80	.20	5,08	260	1157	1080	189
4823-71	4823-81			315	1401	1300	228
4823-73	4823-83			450	2002	1875	328
4823-74	4823-84			540	2402	2250	394

WASHER SPECIFICATIONS

O.D.		I.D.		THICKNESS	
in	mm	in	mm	in	mm
3.00	76,20	.83	21,08	.15	3,81



TITLE: 4823  
 THE INFORMATION CONTAINED IN THIS DRAWING IS THE SOLE PROPERTY OF EBCO ANY REPRODUCTION IN PART OR AS A WHOLE WITHOUT THE WRITTEN PERMISSION OF EBCO IS PROHIBITED.  
 TOLERANCES PER RMA STANDARD A3  
 REV. E  
 DATE: 08-13-20  
 UNITS: INCH [MM]  
 1330 HOLMES RD. ELGIN, IL 60123

\* LOAD/DEFLECTION AS ASSEMBLED, SEE INSTALLATION VIEW

SPECIFICATIONS SUBJECT TO CHANGE