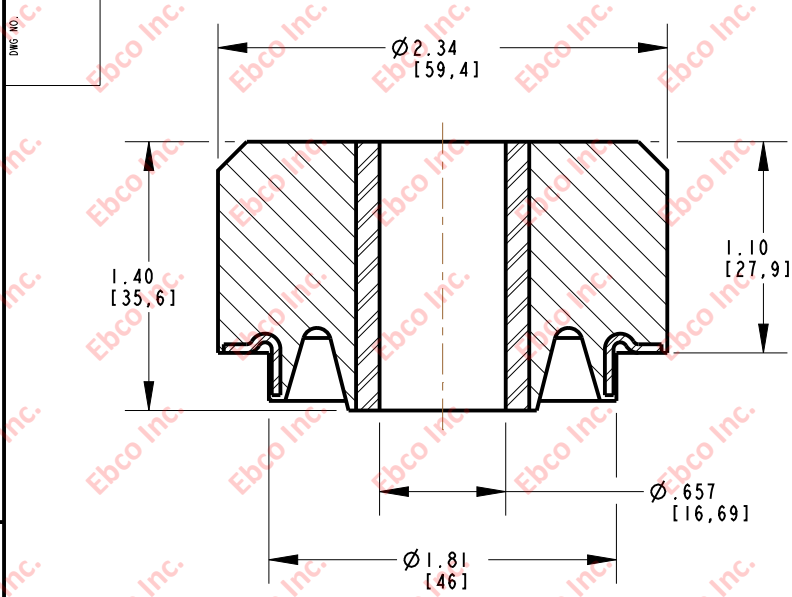
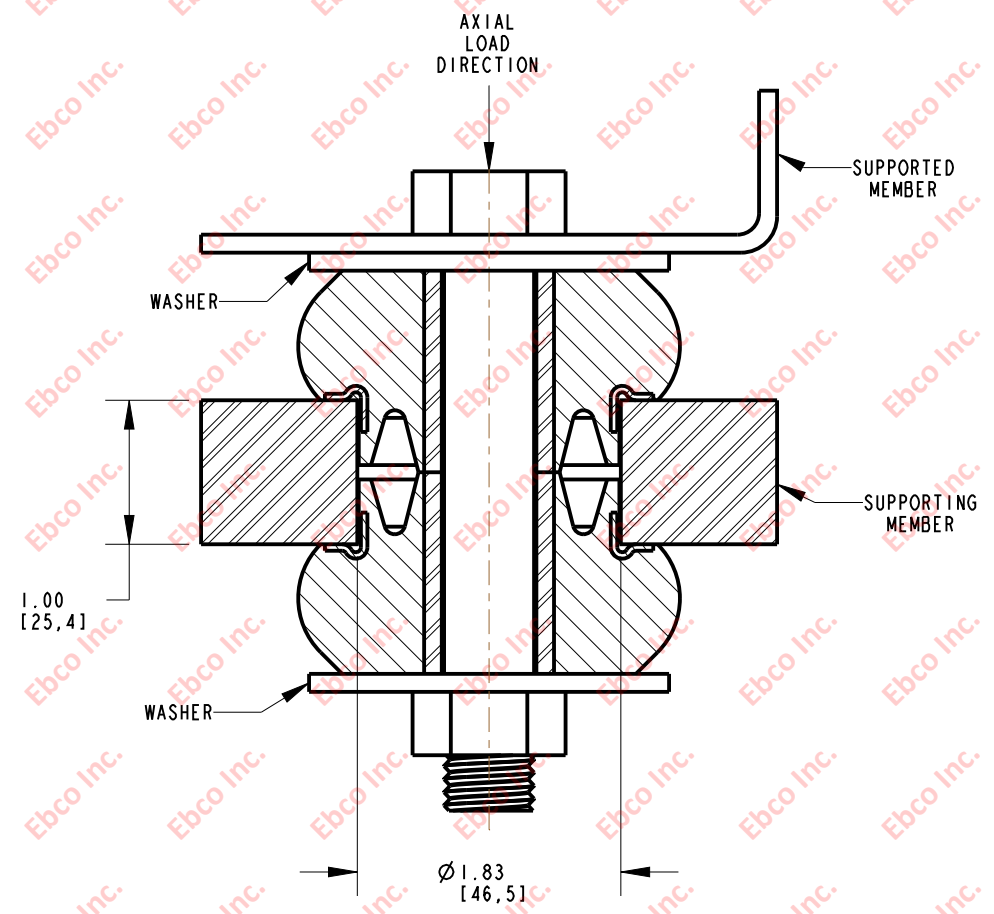


2600



INSTALLATION VIEW (Shown under no load)



INSTALLATION DIMENSIONS

SPECIFICATIONS

| PART NUMBER | | MAX. AXIAL DEFLECTION | | MAX. AXIAL LOAD | |
|----------------|----------|-----------------------|------|-----------------|------|
| NATURAL RUBBER | NEOPRENE | in | mm | lb | N |
| 2600-70 | 2600-80 | .10 | 2.54 | 200 | 890 |
| 2600-71 | 2600-81 | | | 250 | 1112 |
| 2600-72 | 2600-82 | | | 300 | 1334 |
| 2600-73 | 2600-83 | | | 350 | 1557 |

| RECOMMENDED BOLT INFORMATION | | | | TIGHTENING TORQUE | | | |
|------------------------------|-------|--------|-------|-------------------|-------|-------------------|-----|
| ENGLISH | | METRIC | | CLAMP LOAD | | TIGHTENING TORQUE | |
| SIZE | GRADE | SIZE | CLASS | lb | N | ft-lb | N-m |
| 5/8 | 5 | M16 | 9.8 | 14408 | 64090 | 150 | 203 |

| WASHER SPECIFICATIONS | | | | | |
|-----------------------|-------|-------|-------|-----------|------|
| O. D. | | I. D. | | THICKNESS | |
| in | mm | in | mm | in | mm |
| 2.50 | 63.50 | .657 | 16.69 | .125 | 3.18 |



| | | |
|--|--------|------------------------------------|
| TITLE: 2600 | | |
| THE INFORMATION CONTAINED IN THIS DRAWING IS THE SOLE PROPERTY OF EBCO. ANY REPRODUCTION IN PART OR AS A WHOLE WITHOUT THE WRITTEN PERMISSION OF EBCO IS PROHIBITED. | | |
| TOLERANCES PER RMA STANDARD A3 | REV. C | DATE: 08-13-13 UNITS: INCH [MM] |
| 1330 HOLMES RD. ELGIN, IL 60123 | | |

SPECIFICATIONS SUBJECT TO CHANGE