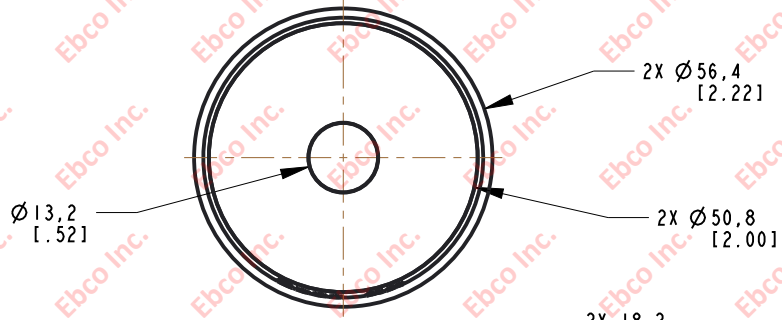
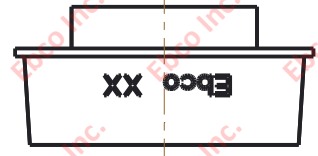
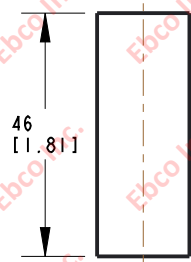
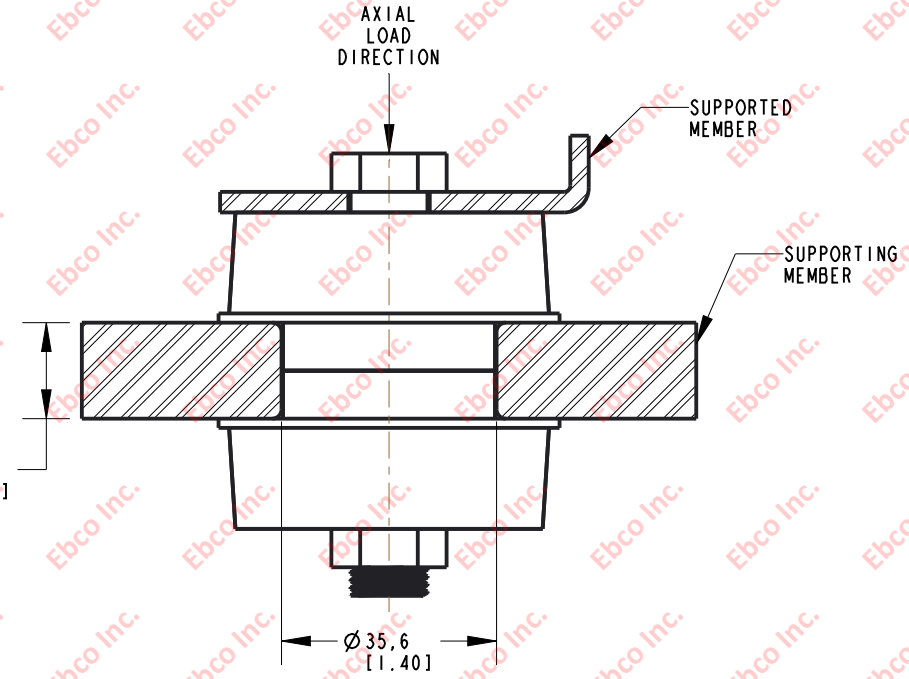
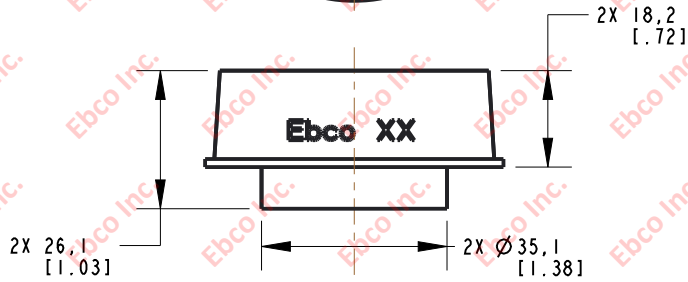


2454

DRG. NO.



INSTALLATION VIEW (Shown under no load)



SPECIFICATIONS

| PART NUMBER    |          | MAX. AXIAL DEFLECTION |     | MAX. AXIAL LOAD |      |
|----------------|----------|-----------------------|-----|-----------------|------|
| NATURAL RUBBER | NEOPRENE | in                    | mm  | lb              | N    |
| 2454-73        | 2454-83  | .035                  | .90 | 170             | 756  |
| 2454-74        | 2454-84  |                       |     | 220             | 979  |
| 2454-75        | 2454-85  |                       |     | 280             | 1246 |

INSTALLATION DIMENSIONS

| RECOMMENDED BOLT INFORMATION |       |        |       | TIGHTENING TORQUE |       |                   |       |
|------------------------------|-------|--------|-------|-------------------|-------|-------------------|-------|
| ENGLISH                      |       | METRIC |       | CLAMP LOAD        |       | TIGHTENING TORQUE |       |
| SIZE                         | GRADE | SIZE   | CLASS | lb                | N     | ft-lb             | N-m   |
| 1/2                          | 5     | M12    | 9.8   | 9046              | 40239 | 75.4              | 101.8 |



|   |               |                |                  |
|---|---------------|----------------|------------------|
| TITLE:  | 2454          |                |                  |
| THE INFORMATION CONTAINED IN THIS DRAWING IS THE SOLE PROPERTY OF EBSCO ANY REPRODUCTION IN PART OR AS A WHOLE WITHOUT THE WRITTEN PERMISSION OF EBSCO IS PROHIBITED. |               |                |                  |
| TOLERANCES PER RMA STANDARD   | REV. <b>B</b> | DATE: 06-09-21 | UNITS: mm [INCH] |
| A3  |               |                |                  |
| 1330 HOLMES RD. ELGIN, IL 60123   |               |                |                  |
| SPECIFICATIONS SUBJECT TO CHANGE  |               |                |                  |