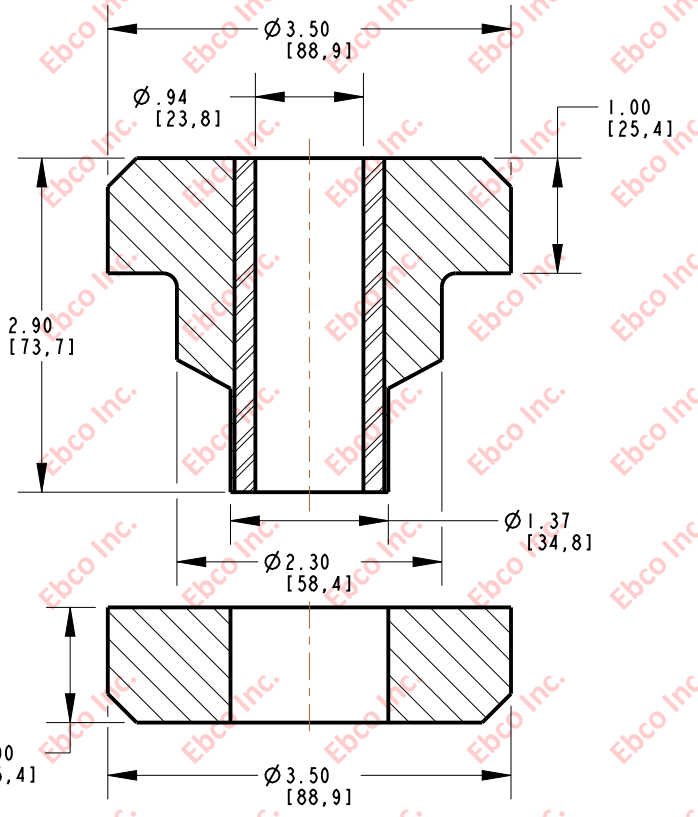
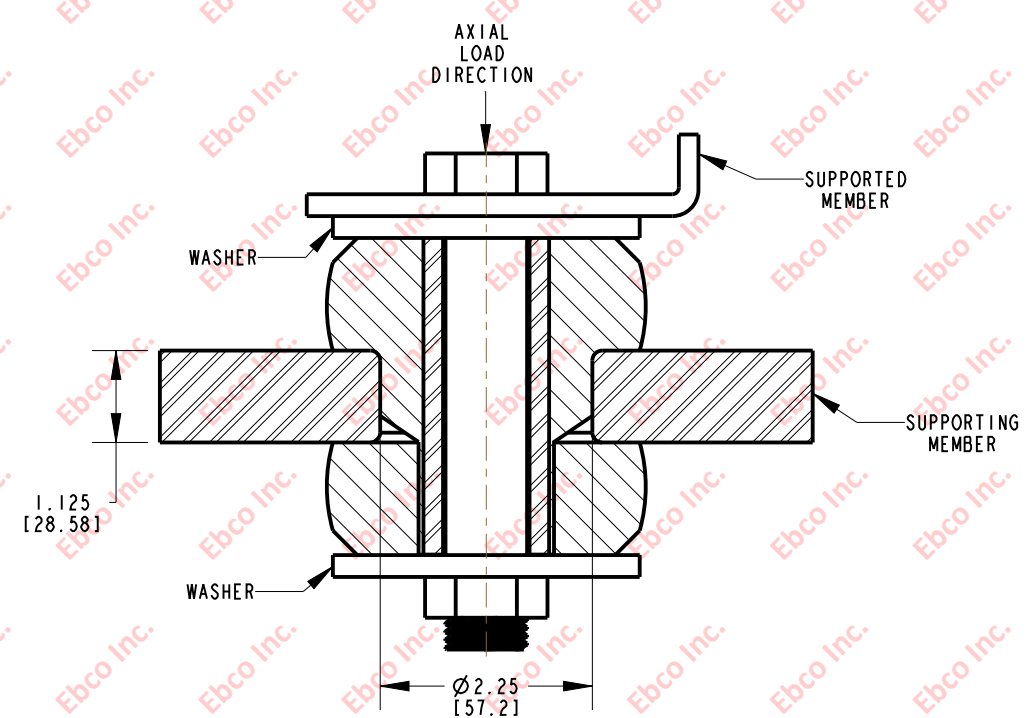


2351



INSTALLATION VIEW (Shown under no load)



INSTALLATION DIMENSIONS

| RECOMMENDED BOLT INFORMATION |       |        |       | TIGHTENING TORQUE |        |                   |     |
|------------------------------|-------|--------|-------|-------------------|--------|-------------------|-----|
| ENGLISH                      |       | METRIC |       | CLAMP LOAD        |        | TIGHTENING TORQUE |     |
| SIZE                         | GRADE | SIZE   | CLASS | lb                | N      | ft-lb             | N-m |
| 7/8                          | 5     | M20    | 9.8   | 29453             | 131013 | 430               | 580 |

| WASHER SPECIFICATIONS |       |      |       |           |      |
|-----------------------|-------|------|-------|-----------|------|
| O.D.                  |       | I.D. |       | THICKNESS |      |
| in                    | mm    | in   | mm    | in        | mm   |
| 3.88                  | 98.55 | .938 | 23.83 | .25       | 6.35 |

SPECIFICATIONS

| PART NUMBER    |          | MAX. AXIAL DEFLECTION |      | MAX. AXIAL LOAD |      |
|----------------|----------|-----------------------|------|-----------------|------|
| NATURAL RUBBER | NEOPRENE | in                    | mm   | lb              | N    |
| 2351-78        | 2351-88  | .10                   | 2.54 | 2000            | 8896 |



TITLE: 2351

THE INFORMATION CONTAINED IN THIS DRAWING IS THE SOLE PROPERTY OF EBCO. ANY REPRODUCTION IN PART OR AS A WHOLE WITHOUT THE WRITTEN PERMISSION OF EBCO IS PROHIBITED.

TOLERANCES PER RMA STANDARD A3

REV. D

DATE: 04-23-14

UNITS: INCH [MM]

1330 HOLMES RD. ELGIN, IL 60123

SPECIFICATIONS SUBJECT TO CHANGE