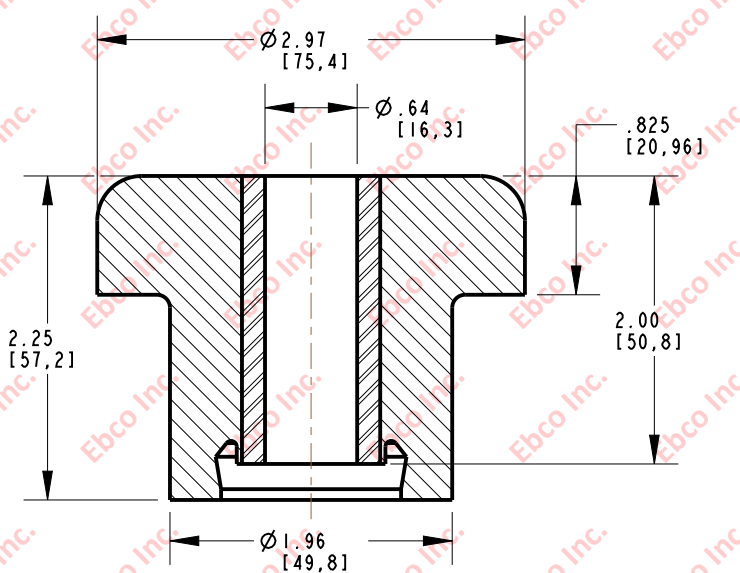
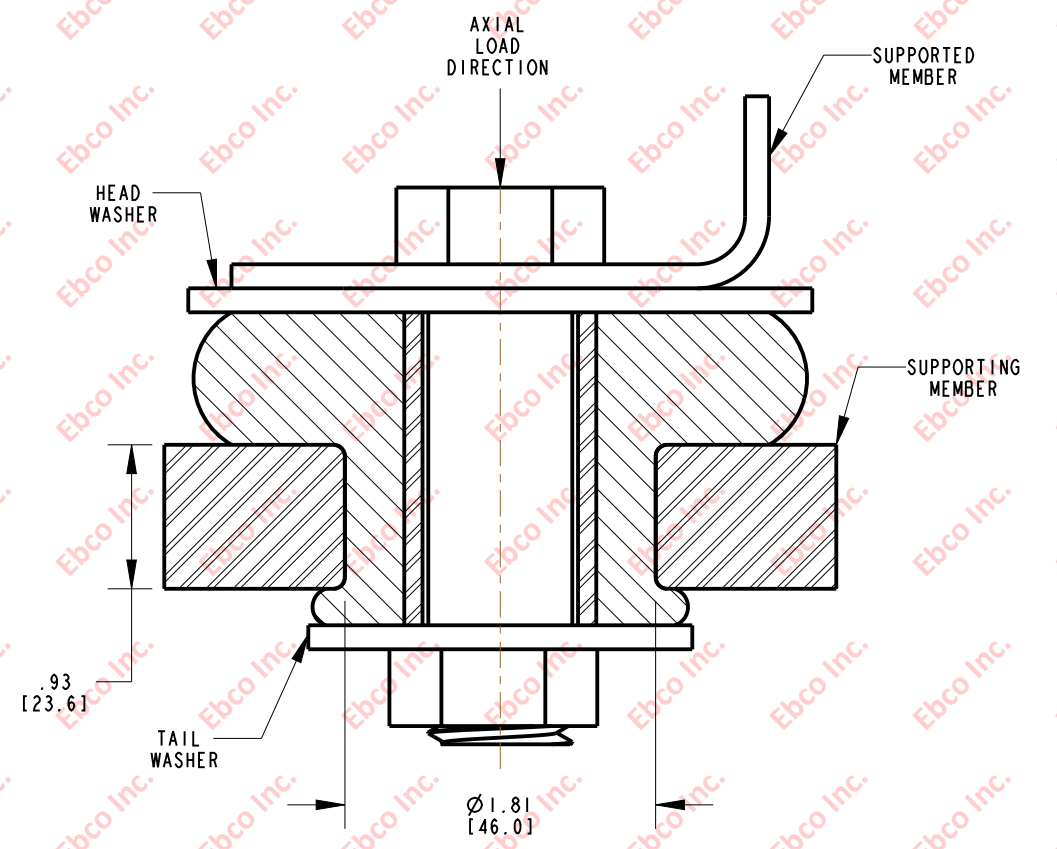


2260



INSTALLATION VIEW (Shown under no load)



INSTALLATION DIMENSIONS

| RECOMMENDED BOLT INFORMATION | | | | TIGHTENING TORQUE | | | |
|------------------------------|-------|--------|-------|-------------------|-------|-------------------|-----|
| ENGLISH | | METRIC | | CLAMP LOAD | | TIGHTENING TORQUE | |
| SIZE | GRADE | SIZE | CLASS | lb | N | ft-lb | N-m |
| 5/8 | 5 | M16 | 9.8 | 14408 | 64090 | 150 | 202 |

| WASHER SPECIFICATIONS | | | | | | |
|-----------------------|------|-------|------|-------|-----------|------|
| TYPE | O.D. | | I.D. | | THICKNESS | |
| | in | mm | in | mm | in | mm |
| HEAD | 3.50 | 88.90 | .64 | 16.26 | .19 | 4.83 |
| TAIL | 2.50 | 63.50 | .64 | 16.26 | .125 | 3.18 |

SPECIFICATIONS

| PART NUMBER | | MAX. AXIAL DEFLECTION | | MAX. AXIAL LOAD | |
|----------------|----------|-----------------------|------|-----------------|------|
| NATURAL RUBBER | NEOPRENE | in | mm | lb | N |
| 2260-72 | 2260-82 | .085 | 2.16 | 450 | 2002 |
| 2260-77 | 2260-87 | | | 1200 | 5338 |
| 2260-78 | 2260-88 | .07 | 1.78 | 1400 | 6228 |
| 2260-79 | 2260-89 | | | 2000 | 8896 |



TITLE: 2260
 THE INFORMATION CONTAINED IN THIS DRAWING IS THE SOLE PROPERTY OF EBCO ANY REPRODUCTION IN PART OR AS A WHOLE WITHOUT THE WRITTEN PERMISSION OF EBCO IS PROHIBITED.
 TOLERANCES PER RMA STANDARD A3
 REV. C
 DATE: 03-02-16
 UNITS: INCH [MM]
 1330 HOLMES RD. ELGIN, IL 60123

SPECIFICATIONS SUBJECT TO CHANGE