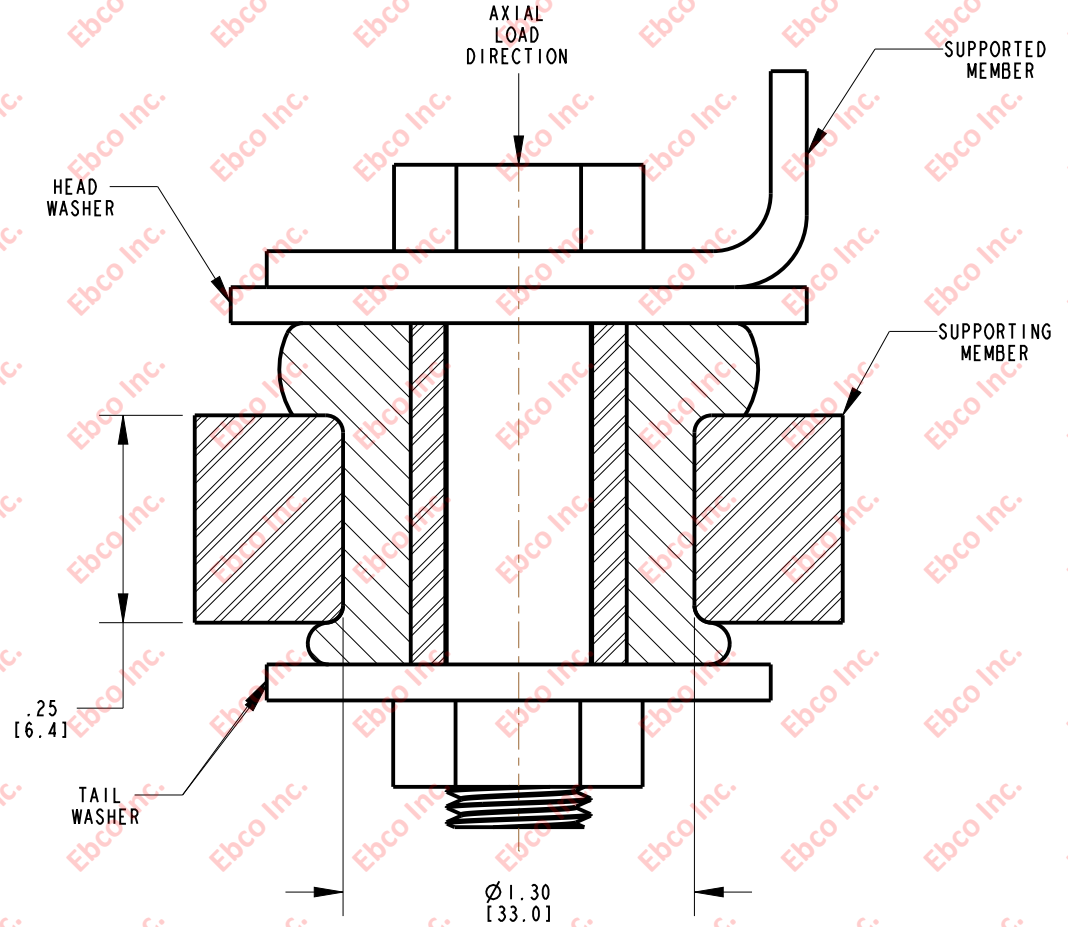
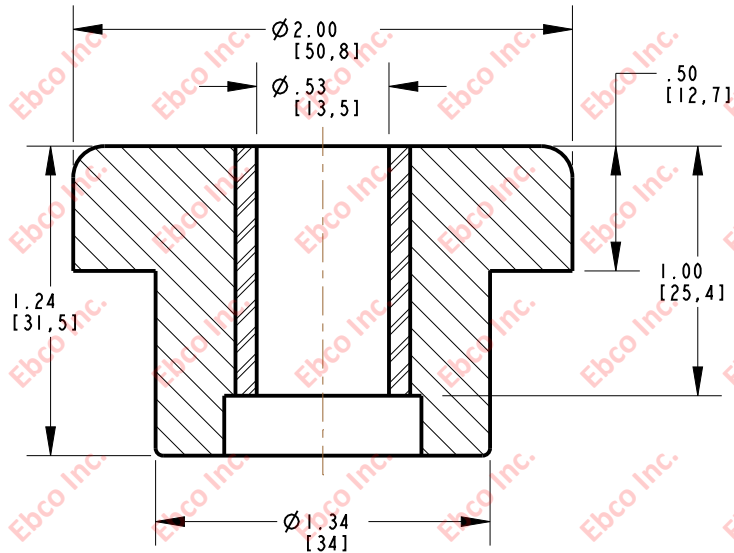


2180

DRG. NO.

INSTALLATION VIEW (Shown under no load)



INSTALLATION DIMENSIONS

| RECOMMENDED BOLT INFORMATION |       |        |       | TIGHTENING TORQUE |       |                   |       |
|------------------------------|-------|--------|-------|-------------------|-------|-------------------|-------|
| ENGLISH                      |       | METRIC |       | CLAMP LOAD        |       | TIGHTENING TORQUE |       |
| SIZE                         | GRADE | SIZE   | CLASS | lb                | N     | ft-lb             | N-m   |
| 1/2                          | 5     | M12    | 9.8   | 9046              | 40239 | 75.4              | 101.8 |

WASHER SPECIFICATIONS

| TYPE | O.D. |       | I.D. |       | THICKNESS |      |
|------|------|-------|------|-------|-----------|------|
|      | in   | mm    | in   | mm    | in        | mm   |
| HEAD | 2.50 | 63.50 | .52  | 13.21 | .125      | 3.18 |
| TAIL | 1.75 | 44.45 | .52  | 13.21 |           |      |

SPECIFICATIONS

| PART NUMBER    |          | MAX. AXIAL DEFLECTION |      | MAX. AXIAL LOAD |      |
|----------------|----------|-----------------------|------|-----------------|------|
| NATURAL RUBBER | NEOPRENE | in                    | mm   | lb              | N    |
| 2180-73        | 2180-83  | .05                   | 1.27 | 200             | 890  |
| 2180-74        | 2180-84  |                       |      | 300             | 1335 |
| 2180-75        | 2180-85  |                       |      | 400             | 1780 |



TITLE: 2180  
 THE INFORMATION CONTAINED IN THIS DRAWING IS THE SOLE PROPERTY OF EBCO. ANY REPRODUCTION IN PART OR AS A WHOLE WITHOUT THE WRITER PERMISSION OF EBCO IS PROHIBITED.  
 TOLERANCES PER RMA STANDARD A3  
 REV. C  
 DATE: 08-12-13  
 UNITS: INCH [MM]  
 1330 HOLMES RD. ELGIN, IL 60123

SPECIFICATIONS SUBJECT TO CHANGE